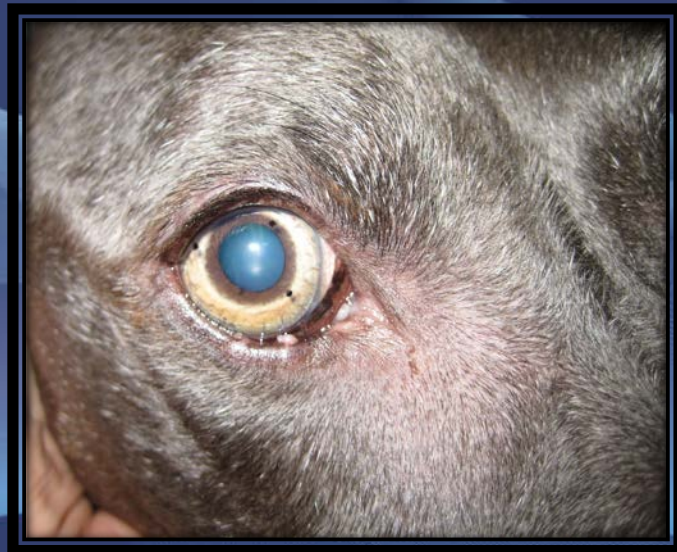


Extended Wear Use of Bandage Contact Lenses in Dogs

Ken Abrams, DVM, DACVO
Veterinary Ophthalmology Services, Inc.
Warwick, Rhode Island



Review of Acrivet Lenses

- November, 2008- December, 2011
- 238 Total Lenses Placed
 - D1- 10 (9.7%)
 - D2- 124 (52%)
 - D3- 14 (6%)
 - D4- 23 (9.7%)
 - D5- 2 (0.8%)

 - C1- 30 (12.6%)
 - C2- 1 (0.4%)
 - C4- 16 (6.7%)
 - C5- 18 (7.6%)

Review of Acrivet Lenses

- 9 Extended wear use cases identified
- Average Age= 12 years
- Breeds:
 - Labrador Retriever
 - Japanese Chin
 - Cockapoo
 - Standard Poodle
 - Golden Retriever
 - Miniature Poodle
 - Westie
 - Husky Mix
 - Bichon Frise
- Neutered Males= 5 ; Spayed Females= 4
- All presented for chronic: corneal degeneration or endothelial dystrophy.
- Non-responsive to various: EDTA, Art. Tears, Optimune...

Results

- Case #1- Bilateral endothelial dystrophy/erosions
 - OS- Trial short term placements over 3 months
 - OD- placed with OS at 3 month time point.
 - OU- left in place and comfortable 25 months with rechecks every 3-4 months.
 - Euthanized at 27 months



Results

- Case #2- OU Corneal Degeneration
 - OD placed first; OS placed 10 months later
 - OD stable 16 months
 - OS stable 7 months
 - Rechecks every 2-3 months
 - Recheck in the Spring



- Case #3- OS Corneal Degeneration
 - OS lens placed
 - OS lost at 7 month mark
 - Euthanized soon after.

Results

- *Case #4- OS Corneal Degeneration*
 - First lens placed for 1 month then lost
 - Second lens placed for 3 months then lost
 - Third lens placed for 6 months then lost
 - Fourth lens placed for 8 months then euthanized.
- *Case #5- Corneal Degeneration*
 - OS Lens placed first
 - OD Lens placed 8 months later
 - OS lens stable 9 months
 - OD lens stable 1 month
 - Patient died one month after last recheck

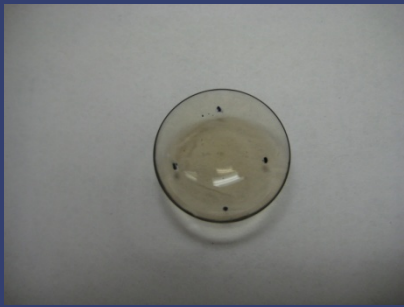
Results

- Case #6- OS Corneal Degeneration
 - Lens Placed
 - Currently in place for 2 months

- Case #7- OU Endothelial Dystrophy
 - Lenses Placed OU
 - Stable at 1 month, 5 months
 - Recheck due in Spring

Results

- *Case #8- OS Corneal Degeneration*
 - Lens placed OS but out at 3 week point
 - Replaced and stable 1 month
 - Trial without lens
- *Case #9- OD Corneal Degeneration*
 - Lens placed
 - Lens stable at 2 months
 - Lost to follow-up.
- Note: Placed medium term lenses in 2 cats- tolerated.



Conclusions

- Acrivet soft contact lenses have high retention rate.
- Lenses greatly improve comfort in chronic corneal disease.
- Lenses remain stable, clean, and non-infected for several months.
- Lenses adhere to even stromal defected corneas.

Suggestion to Acrivet...

